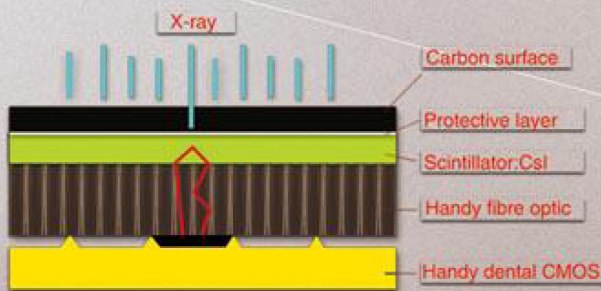


**andy**<sup>®</sup>



اول دنتال



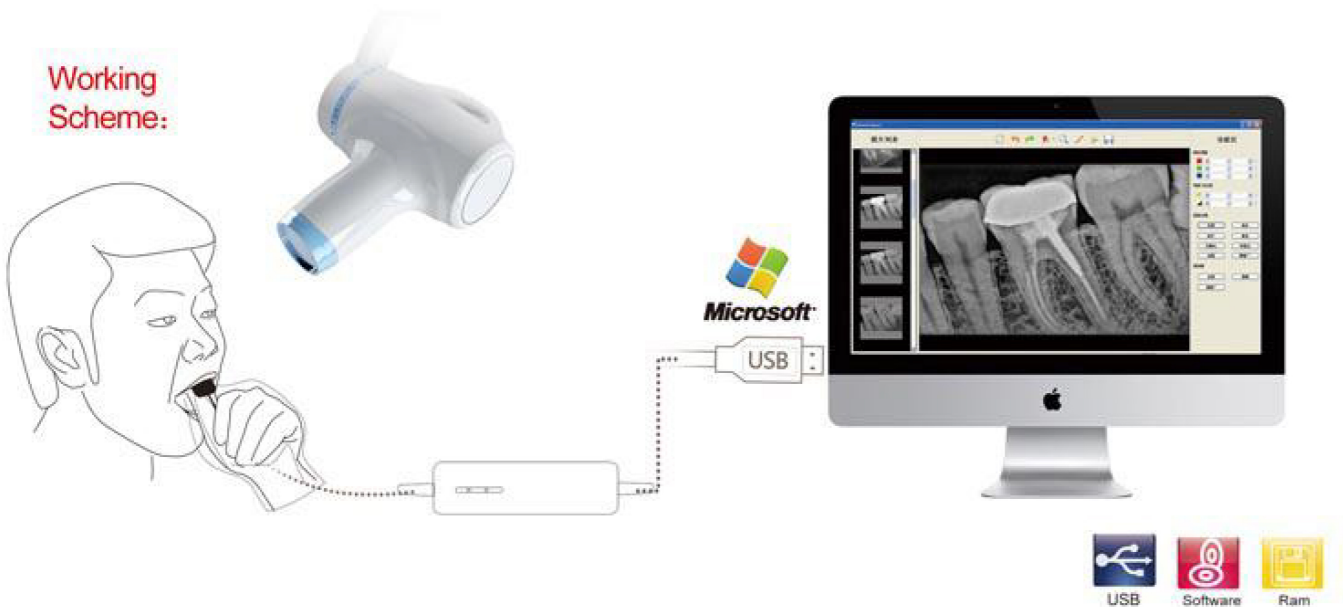
**Advanced FPS with CSI:Ti technology:**  
Higher sensitivity plus higher resolution  
Best image quality with lowest X-ray dose



# HDR

Dental Digital X-ray Sensor HDR 500/600

**Working Scheme:**

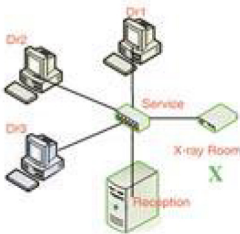


**APS CMOS technology:**  
18.5µm pixel size  
5T pixel type  
Real resolution > 20 lp/mm.



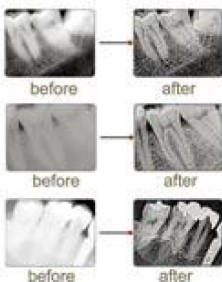
**Multi-user solution**

The idea of <HandyDentist > management system is to provide multiuser solution. Sharing information in database. Plug and play connector make the sensor transferable from room to room.



**New HandyDentist software:**


Powerful image processing & preprocessing  
Easy to operate  
Multi-user solution  
Connectable to the most management systems on the market under DICOM3.0 protocol.



**The Effect of image process**  
"Optimizer" increase the intensity of contrast, make dentist feel easier to read the image.



**TWAIN driver, which is compatible with the softwares of KODAK, SIRONA, SCHICK, etc.**

Specification		
Item	HDR 500	HDR 600
Sensor		
Chip Type	CMOS APS	
Fiber Optical Plate	Yes	
Scintillator	GOS/CsI	
Dimension	27.5 x 38.5 mm	32.3 x 44.3 mm
Active Area	22.5 x 30 mm	27 x 36 mm
	675mm <sup>2</sup>	972mm <sup>2</sup>
Pixel size	18.5µm	
Image Pixel	1.9M(1600*1200)	2.7M(1920*1440)
Resolution (lp/mm)	Theoretical:27lp/mm Measured:12-14 lp/mm(GOS) 16-20 lp/mm(CsL)	
Operation	Windows 2000/XP/Vista/ Win7/Win8(32bit&64bit)	
Additional	TWAIN Driver	