

Aidite®

cameo®

Dental Glass Ceramic

| Transparency Aesthetics | Excellent Mechanical Property | Instant Restoration |



**Aidite®**  
Aidite (Qinhuangdao) Technology Co.,Ltd.  
Tel : 0086-335-8587898  
Fax: 0086-335-8587198  
Email: info@aidite.com  
NMPA ISO13485 CE0197 FDAK111291

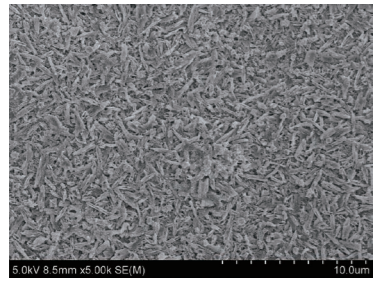
■ Ideal diagnosis and treatment experience



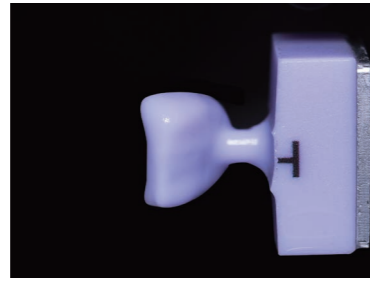
Dental Glass Ceramic

## Cameo Dental Glass Ceramics Material

Cameo Dental Glass Ceramic is a globally popular digital chair side all-ceramic material, which is easy to mill and crystallization process only takes 20 minutes, with the CAD/CAM system of high efficiency, precise production process precisely matched, advanced to achieve instant restoration; superior transparency, presenting a highly bionic aesthetic effect.



Micro-and Nano-Porcelain Structure



Veneer



Veneer effect

### Product advantages:

#### • Excellent mechanical strength

The three-point bending strength is increased to  $400 \pm 60$  MPa, allowing CAD/CAM system to design with higher accuracy, reducing the processing difficulty of ultra-thin veneer and other restorations, and improving the strength and safety of materials seated in the mouth

#### • Overall fitness, easy to seat

The scientific nanosmicron crystallization structure provides better edge stability and structural accuracy for milling restoration, effectively simplifies the operation process of repeated seating and polishing, and realizes the efficient fitting of the technician's processing and clinical seating teeth



#### • Simulate the hardness of a natural tooth

Compared with other types of materials, the hardness of Cameo glass ceramics is closer to that of natural human teeth, which can reduce the excessive wear of the occlusion teeth caused by the hardness difference, and maintain the abrasion of the restorations and the surrounding teeth

#### • The clinical experience of instant restoration.

As an all-ceramic material with a shrinkage ratio close to zero, it can provide great convenience for efficient design and digital processing, and provide you with ideal and comfortable instant diagnosis and treatment experience combined with the rapid crystallization process

#### • More intuitive transparency aesthetics

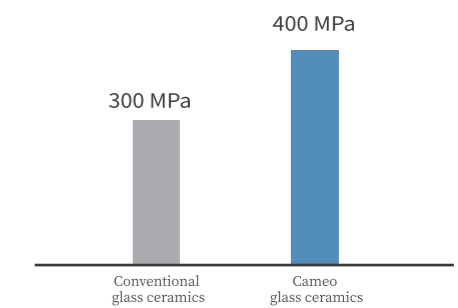
The product has HT (high transparency) and LT (low transparency); HT (high transparency), good light transparency, restores the color and texture of natural abutment  
LT (low transparency), optional low light transparency, provides the healing effect of mask and complement

### complement:

Coefficient of thermal expansion ((25-500°C) [10 <sup>-6</sup> /K]	Three point bending strength [MPa]	Chemical solubility [μg/cm <sup>2</sup> ]	Density[g/cm <sup>3</sup> ]
10.5±0.5	400±60	≤40	2.47±0.05

### calcining curve:

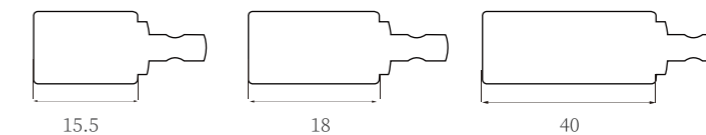
The initial temperature	The drying time	Heating rate	The highest temperature	The highest temperature	The final temperature
450°C	4min	40°C/min	840°C	6min或2min	300°C



Flexural strength: three point bending resistance test

### Specification:

- Color: VITA16, bleach white 4 (BL1/BL2/BL3/BL4)
- Size: 15.5\*11\*13; 18 \* 13 \* 15; 40 \* 15 \* 14
- Transparency: HT (high transparency) and LT (low transparency)
- Suitable for: a variety of mandrels to choose from, can match a variety of milling machines.



### Indications:

- Veneer
- Inlay
- Anterior crown
- Onlay
- Posterior crown
- Full crown bridge

