

Digital image acquisition chain

Complete digital image acquisition chain, combined with data integration platform, bring you high value clinical services



CBCT



Intraoral Scanner



PSP



Intraoral Sensor



Portable X ray machine



Intraoral Scanner S6000



Fussen Technology Co., Ltd.

📍 3/F, Minlida industrial building B, zone 4, honghualing Industrial Zone,

1189 Liuxian Avenue, Nanshan District, Shenzhen

☎ 400-660-5770

🌐 www.fussengroup.com

✉ sales@fussenct.com

ⓘ The information is for reference only. Please contact Fussen sales team for details.

Please refer to the manual for taboos or precautions

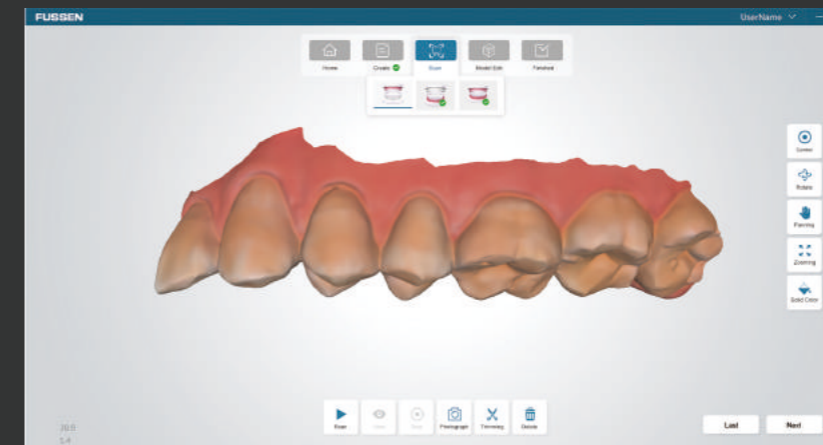


Small size and light weight

- Scanning head size 18.5mm (high) × 19mm (width)
- Weight 350g
- Suitable for patients with different opening degrees

No need to spray powder

- Reduce the complexity of clinical operation
- Simplify scanning process and save acquisition time
- Improve patient comfort



Color scanning

Real response to the actual situation of the patient's mouth Easy to distinguish hard and soft ti



Endoscope function

During the scanning process, the patient's oral condition can be observed and photographed Convenient communication between doctors and patients"

High scanning accuracy and high speed

- High scanning accuracy, to meet the clinical needs
- The whole mouth scanning time is less than 5 minutes, which is more time-saving than traditional impression



continuous scanning

- Shorten the clinical operation time and improve the efficiency
- Real time display of scanning data, doctors can analyze the data simultaneously



The scanning head supports multi-mode disinfection

- The scanning head is detachable, and can be disinfected by high temperature and high pressure or immersion
- Avoid cross infection, safe and reliable



Occlusal relationship examination

- After scanning, different color ladder display can be used to assist judgment
- whether the complex space is enough and the occlusal relationship is correct

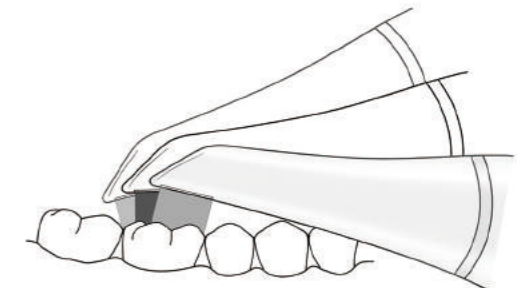
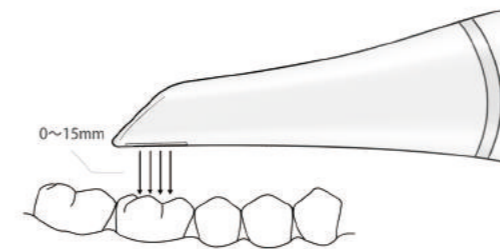


Data intelligent optimization

- The information of buccal and lingual mucosa was removed
- Make data more accurate

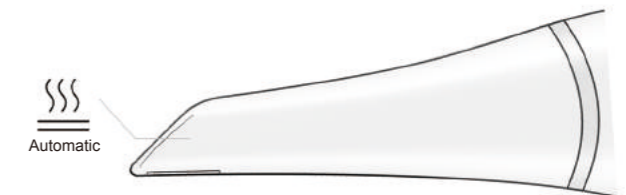
Big depth of field

15mm depth of field to ensure data integrity



Built in anti fog function

- The scanning head has built-in automatic heating and antifogging function
- Provide guarantee for the integrity of one-time data collection

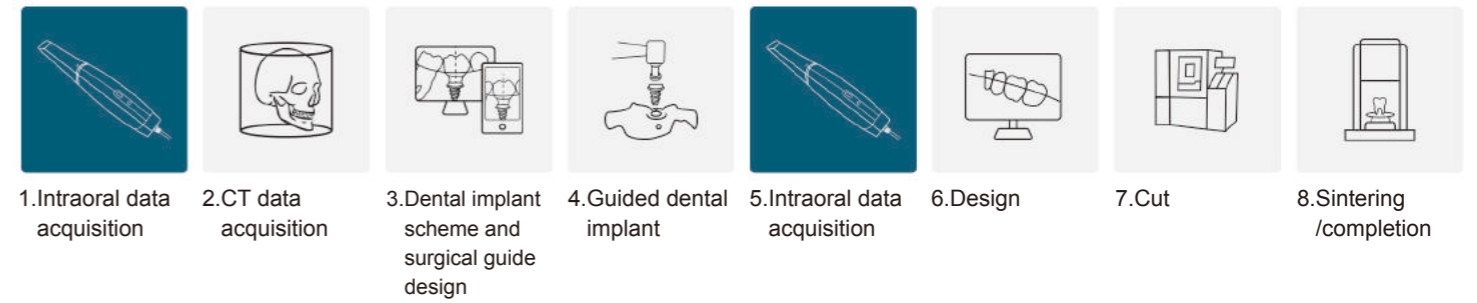




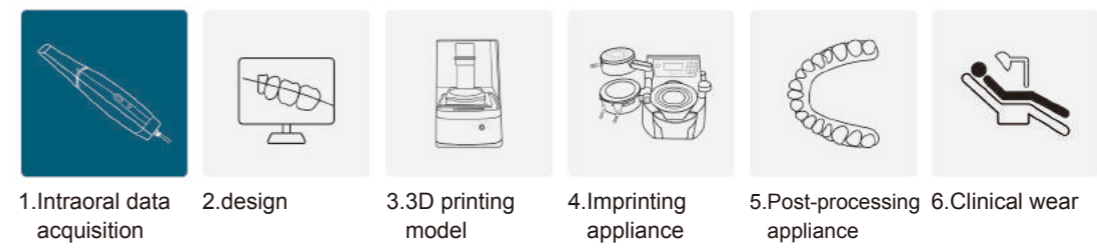
Digital restoration of chair side immediate solution



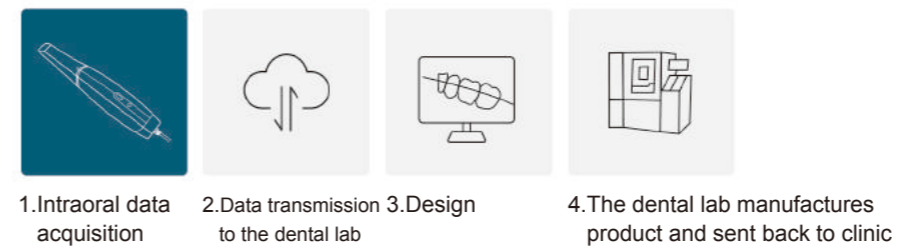
Digital dental implant chair side immediate solution



Digital orthodontic chair side immediate solution



Digital clinic connects dental lab





Traditional way of mold taking

- The preparation time is long
- The patient has a strong sense of foreign body
- Poor comfort
- The waiting time of denture is long
- Single static model data is inconvenient for communication among doctors, technicians and patients

Mold extraction by intraoral scanner

- The preparation time is short
- The foreign body sensation of the patient is small
- Improved comfort
- The waiting time of denture was shortened
- The color data in the mouth can be displayed immediately, which is convenient for communication among doctors, technicians and patients



Wide clinical applications

It can be used in dental restoration, implant and orthodontics



Cloud storage

It can store data in the cloud for doctors to communicate and develop solutions in the cloud
Support the review of patient files, establish customer database, and improve the retention rate of patients



After sale service

Global after-sale network service system

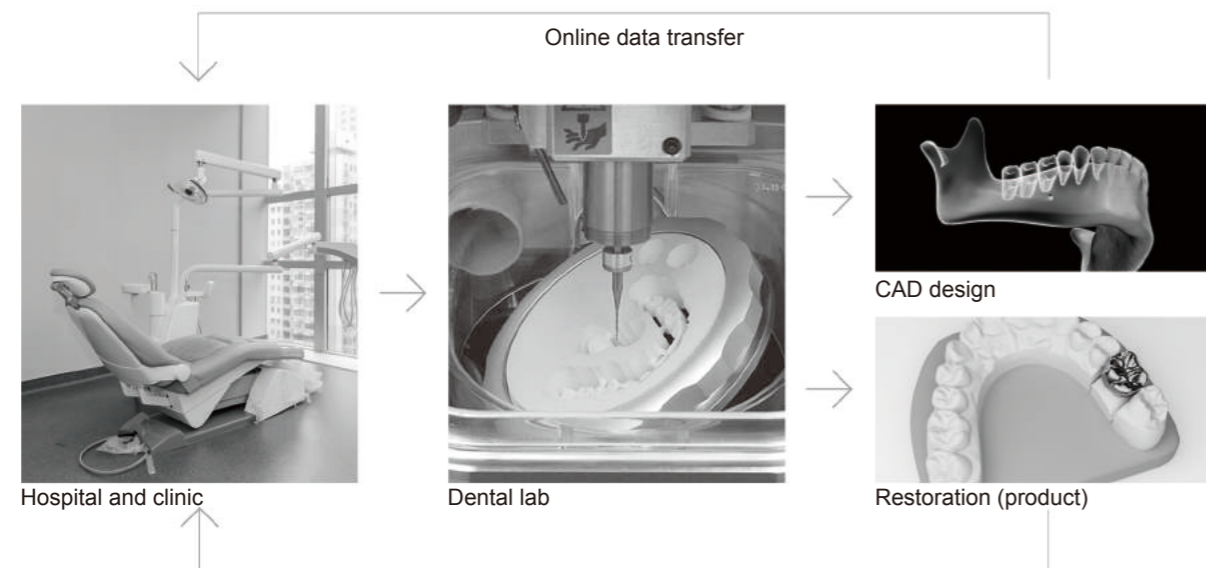
30 minutes response

8 hours service in city

48 hours domestic

Open data format

- Output STL, ply format, compatible with most of the CAD design software
- Data can also be exported and imported through other ways



Technical specification Intraoral scanner

Product type Portable intraoral scanner	Anti-fog technology Built in automatic heating anti-fog	Sensor High speed CMOS
Disinfection methods High temperature and high pressure disinfection/immersion	Splicing technology Accur-3d automatic splicing technology	Output format STL , PLY
Scan type Color scanning without powder spraying	Data color Color imaging	Scanning mode 3D video scanning
Scan speed Full mouth scan ≤ 5 minutes	Scan depth of field 15mm	Length of connecting cable 2m
Scan head size 18.5mm(H) x 19mm(W)	Weight 350g	data transmission USB 3.0
Scanner size 240mm(L) x 39.8mm(W) x 57mm(H)		