

RF-Q4-P001 3.2 Edition

We reserve the right to design and modify our products without prior notice



CE ISO CFDA

PRODUCT

Guilin Refine Medical Instrument Co., Ltd

Add: 8-3 information industry park Qixing district Guilin Guangxi China

Tel: 0086-773-7796686

E-mail: sales1@refine-med.com

<http://www.refine-med.com>



Official website

Guilin Refine Medical Instrument Co., Ltd



ABOUT REFINE MEDICAL

COMPANY PROFILE

Refine Medical, focuses on R&D, manufacturing and selling dental products. The team has 15 years of experience on developing and producing dental ultrasonic products. With high quality products, win-win cooperation philosophy, better service, Refine is remarked as a reliable supplier among our partners.

With 50 units of imported full automatic CNC machines and yearly over 80,000 units' production capacity facility, Refine Medical is one of the few manufacturers in the industry who can 100% self-supply core components of the ultrasound handpiece and scaler tip. The production management applies strictly by ISO13485 and GMP standards. The products are CE and CFDA certified and now exported to more than 63 countries worldwide.

Main products: Ultrasonic Scaler, Ultrasonic Activator, Curing Light, Obturation System, Apex Locator, Endo Motor, Dental Sensor and X Ray etc.

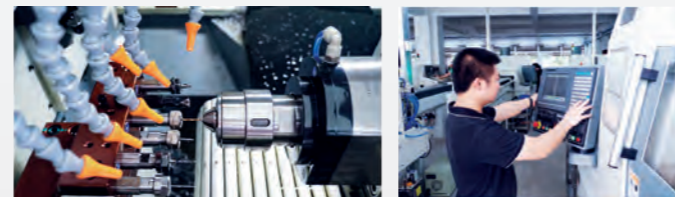
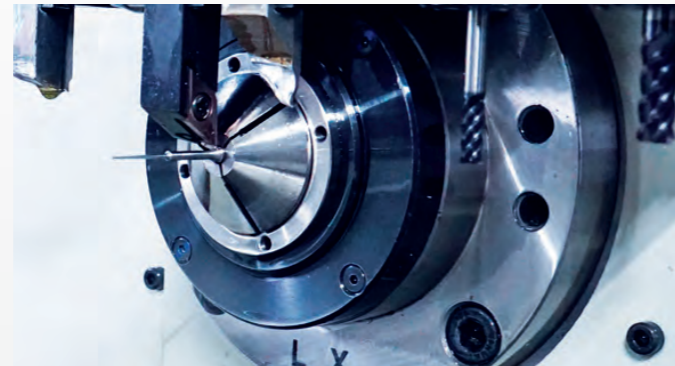


CNC Center

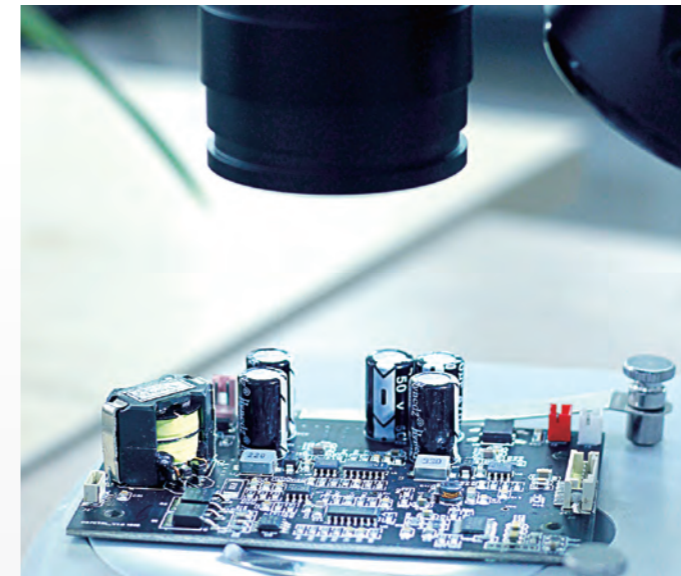
QUALITY PROFESSION INNOVATION

Professional equipments are necessary to ensure the products' stability and uniformity. With the CNC machines worth three million dollars, Refine insists on manufacturing all the core components by ourselves.

Advanced equipment



FOCUS ON DENTAL ULTRASONIC TECHNOLOGY

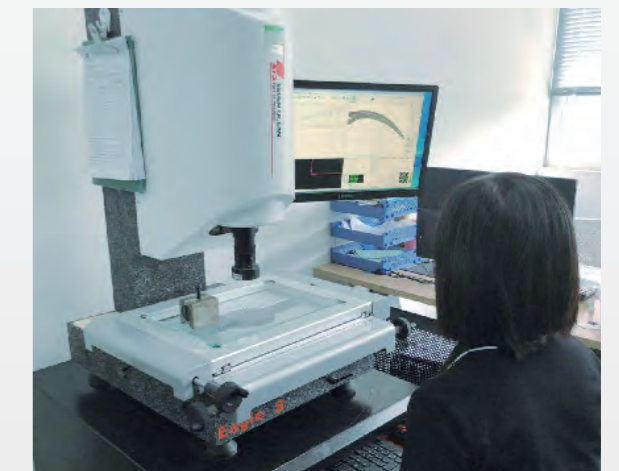


Details determine success or failure

From the electronic components on PCB board to the whole assembly, we pay attention to every detail of the product to ensure the safety and reliability of product quality.

Strict quality control with professional equipment

Refine tests the product under simulate various extreme environments to ensure product quality with professional equipments.



Dental X-ray

A smart dental digital solution

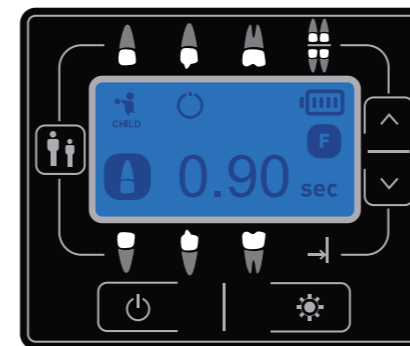
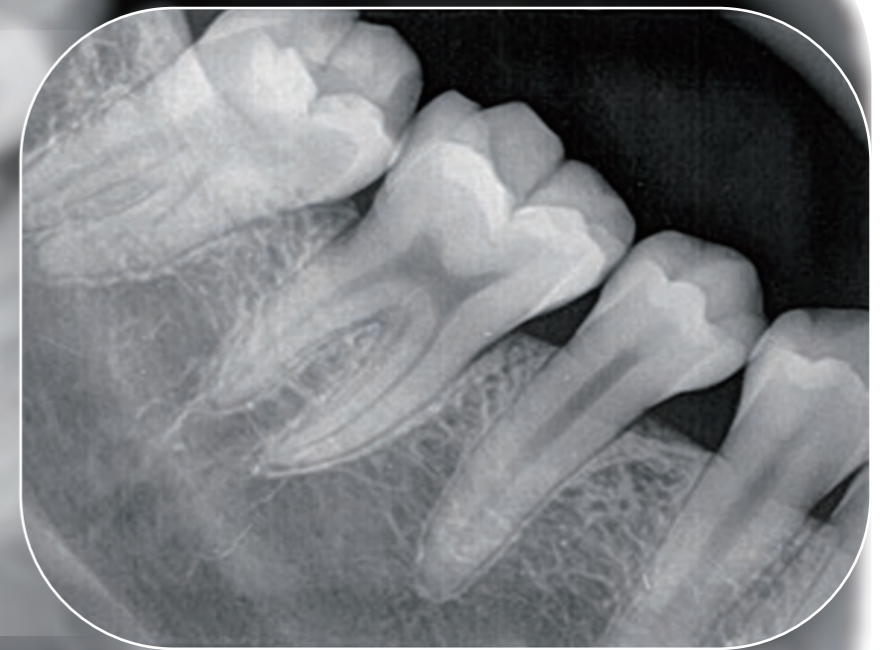


0.4mm focus to get high definition images

High-voltage generator with 0.4mm focus, high-definition imaging, enjoy top quality

High frequency DC technology

Ultra-low radiation, the exposure dose is reduced by more than 30% compared with the standard generator, maximizing effective rays and greatly reducing the radiation intensity



Ergonomic design

Shoot different teeth, fine-tune the shooting time, and achieve personalized and precise control

High capacity lithium battery

950 mAh ultra high capacity battery, battery can be replaced, low cost of use

Multiple shooting methods

Handheld shooting



Technical Parameter

Tube Voltage 60KV	Highest Voltage 70KV	Tube Current 2mA
Exposure Time 0.01-2s	Focus 0.4mm	Anode Target Angle 12°
Total Filtration 1.0mmAl	Battery Capacity 950mAh	

